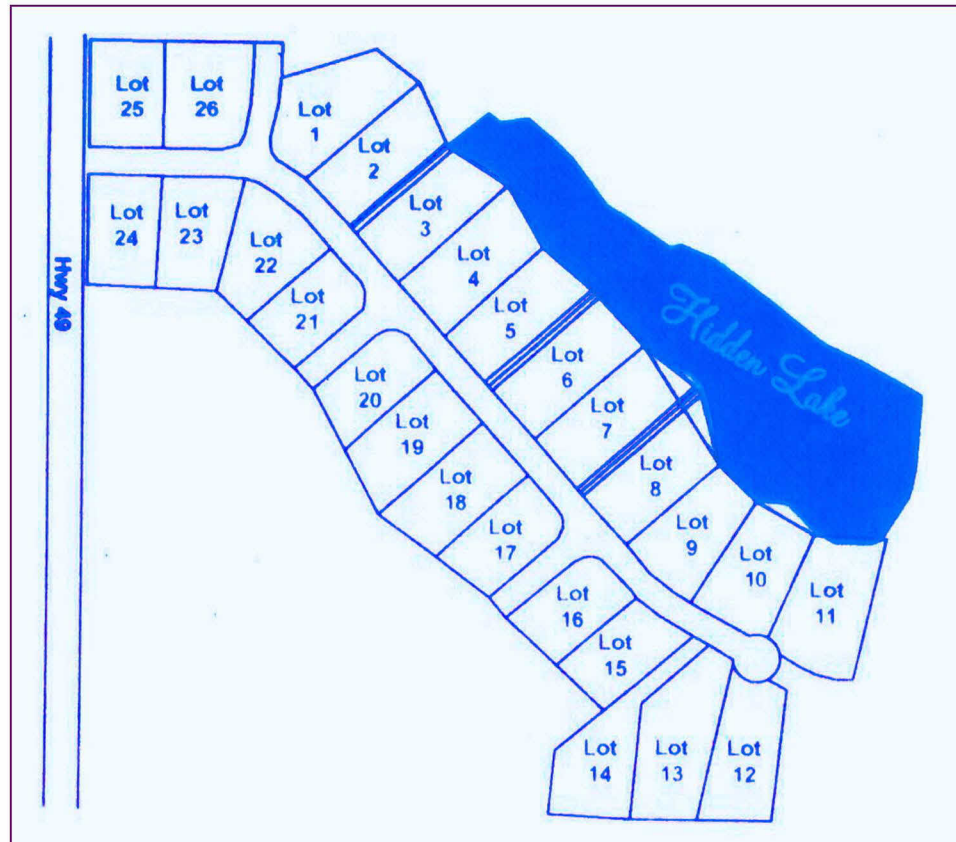


Hidden Lake Estates

Approximate Lot Size

| | |
|----|------|
| 1 | 1.16 |
| 2 | 1.06 |
| 3 | 1.04 |
| 4 | 1.03 |
| 5 | .98 |
| 6 | 1.14 |
| 7 | 1.13 |
| 8 | 1.06 |
| 9 | .92 |
| 10 | .99 |
| 11 | 1.16 |
| 12 | .85 |
| 13 | 1.26 |
| 14 | 1.05 |
| 15 | .75 |
| 16 | .76 |
| 17 | .84 |
| 18 | .98 |
| 19 | .97 |
| 20 | .81 |
| 21 | .77 |
| 22 | .94 |
| 23 | .87 |
| 24 | .80 |
| 25 | .89 |
| 26 | 1.01 |



Lots are \$22,000 each.

Centrally located.

Choose from either Tallassee schools (drop off and pick up) or Reeltown schools (busing).



Sherry Adcock
 Broker/Owner, CRS
 334-444-6387 cell
 sherry@horizonrealtysells.com

Hidden Lake Estates is just 15 minutes from Lake Martin, 30 minutes from either Auburn or Montgomery. The property is located off Highway 49 south and is a few minutes from I-85.

